

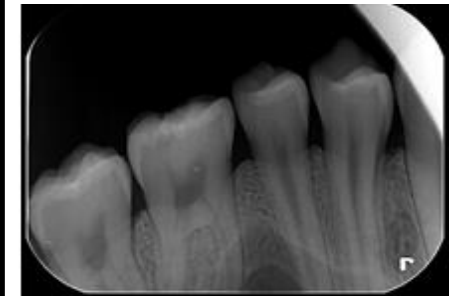
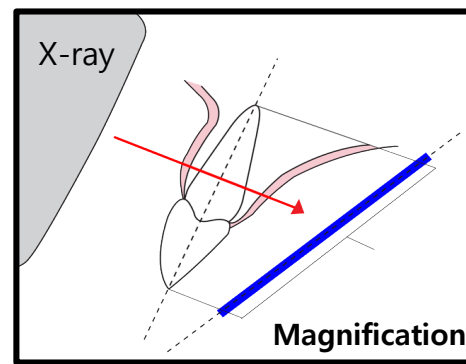
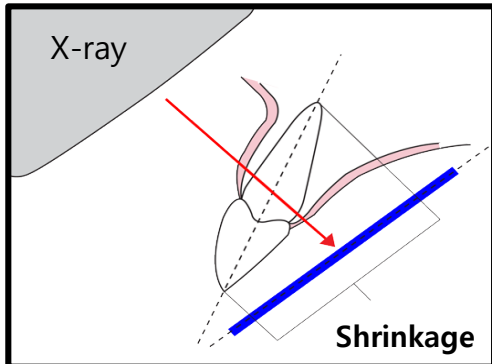


# Cone Indicator Guidance

# Why use a cone indicator?

Correct positioning of the imaging plate as well as correct aiming of the X-ray beam are essential for image consistency and quality.

1. Standardized, distortion free and reproducible images
2. Constant X-ray quality over time whoever takes the X-ray
3. No overlapping, cone cut, and ocular guesswork
4. No Imaging plate bending and movement



# Performing the X-rays

It is recommended to continue using x-ray positioning techniques and tools to ensure the resulting image is complete and includes all the information required for diagnosis. It is recommended to use the **Snap-A-Ray Xtra** by *Dentsply RINN* holder or equivalent products available on your market.

If using holders with alligator clips, it is advisable to file down the points to avoid puncturing the Barrier Envelope. It is important to take care not to puncture the Barrier Envelope or damage the Imaging plate.

